

# Soft Modular Sofa

Jasper Morrison, 2016

**vitra.**



## Soft Modular Sofa

The Soft Modular Sofa is Jasper Morrison's updated interpretation of what has become a modern classic: the low-slung modular sofa with a decidedly horizontal emphasis. Uniting carefully balanced proportions, great comfort and a conscious renunciation of decorative details, the Soft Modular Sofa exemplifies the characteristics of this sofa type in their purest form. Firmly in line with his philosophy of 'super normal' design, Jasper Morrison has successfully coupled home-like informality with precise finishing and expressive clarity. As a result, the Soft Modular Sofa functions like an architectural element that can be subtly integrated in any interior.

The voluminous cushions invite the sitter to lounge and relax on the Soft Modular Sofa. Its high-quality interior construction, consisting of various foams and a spring core, offers superb comfort and ensures that the cushions return to their original form after use. On one hand, the black base frame is part of the functional design, enabling a practical and stable connection of the modules. On the other, as a plinth-like platform with rounded corners, it references the sensual elegance of art deco.

Thanks to its modular design with side, corner and central elements as well as a platform and a chaise longue, the size and form of the Soft Modular Sofa can be customised to meet a diverse range of requirements. And optional elements like the ottoman and additional cushions as well as a wide selection of leather and fabric covers in a variety of colours allow further personalisation of any individual configuration.

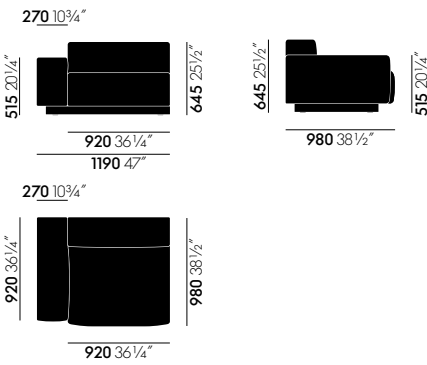
### Materials

- **Seat:** steel frame, wood construction with steel springs, polyurethane foam structure and visco cover. Seat height under user's weight: 270 mm (measured in accordance with EN 1335-1).
- **Armrests and backrest:** wood construction with polyurethane foam structure and chamber cushion overlay (filling made of polyurethane foam rods and polyester fibres).
- **Covers:** removable.
- **Throw cushions:** foam cube and ball fibre filling.
- **Neck cushion:** polypropylene pellet filling.
- **Glides:** plastic glides with levelling adjustment.
- **Ottoman structure:** wood construction, steel springs and polyurethane foam structure with visco cover.

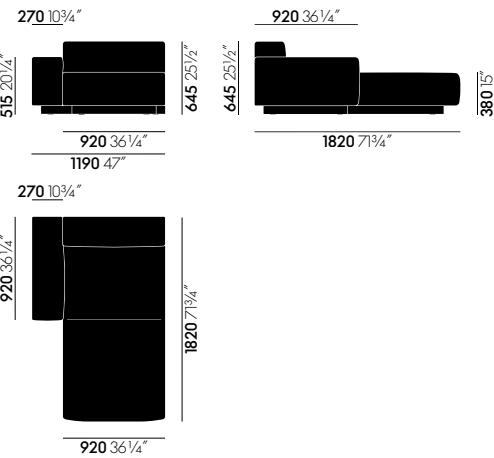
1	Soft Modular Sofa
2-3	Dimensions
4-6	Configurations

7	Loose cushions, cushion combinations
8	Upholstery construction

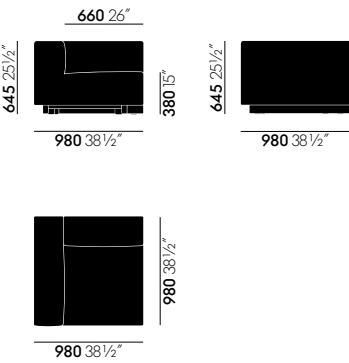
9-18	Cover fabrics
19	Coffee and side tables



Side element left - low armrest \*

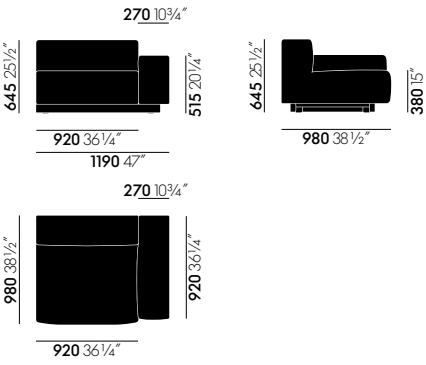


Chaise Longue left - low armrest \*

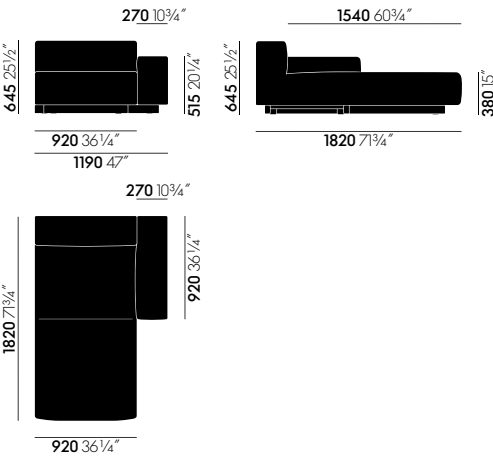


Corner element left

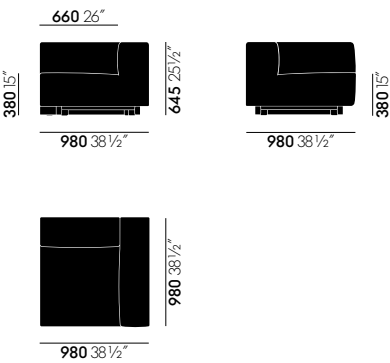
\* optionally available with high armrests, height 64.5 cm identical to backrest



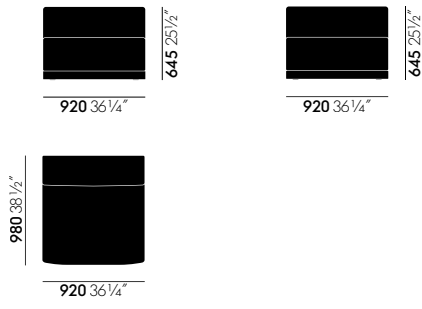
Side element right - low armrest \*



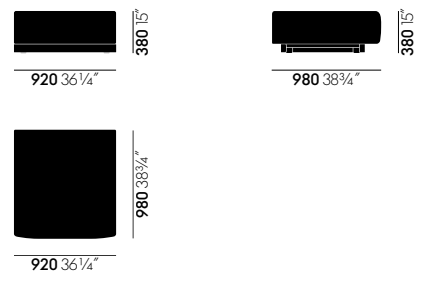
Chaise Longue right - low armrest \*



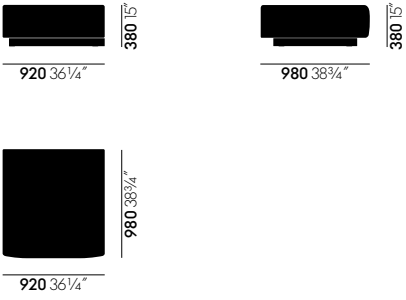
Corner element right



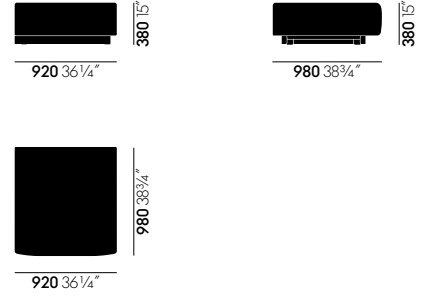
Central element



Platform central



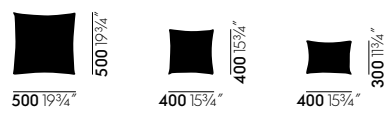
Platform left



Platform right



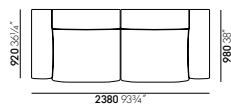
Ottoman



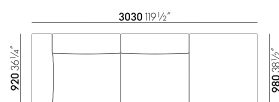
Decorative cushions



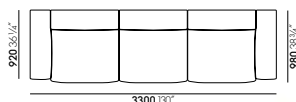
Neck cushion



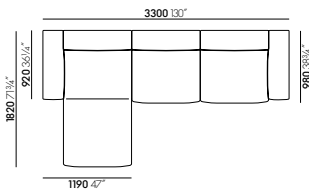
**Two-seater** consisting of side elements left and right, with decorative cushions.



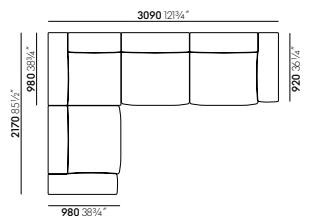
**Three-seater** consists of a side element left with a low armrest, a central element and a platform right.



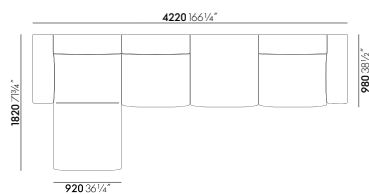
**Three-seater** consisting of side element left, central element, side element right, with short neck cushion and free-standing ottoman.



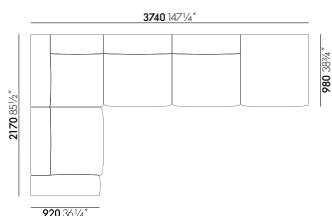
**Three-seater** consisting of chaise longue left, central element and side element right, with decorative cushions and a long neck cushion.



**Corner sofa** consists of a side element left, a corner element left, a central element and a side element right, with decorative cushions and a long neck cushion.



**Four-seater** with chaise longue consisting of chaise longue left with low armrest, central element, central platform and side element right with low armrest.



**Corner sofa** consists of a side element left with low armrest, a corner element left, two central elements and a platform right.



Optional throw cushions and neck cushions are available to personalise the seating comfort and add decorative accents. The cushions can be ordered in the same choice of cover materials as the sofa elements.

**Filling:**

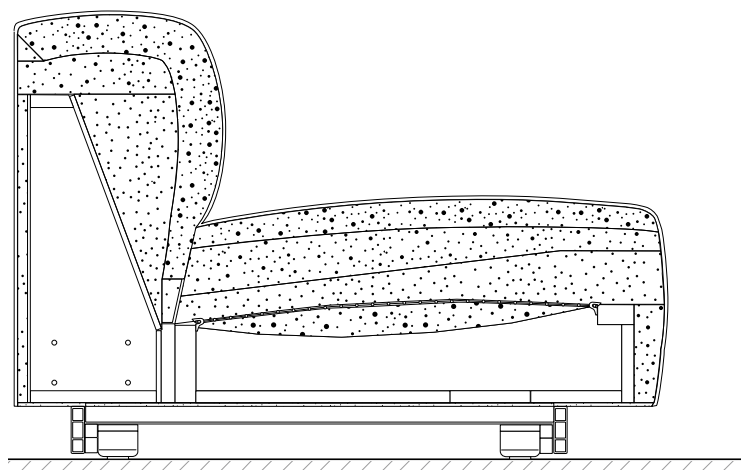
- neck cushions filled with plastic beads
- throw cushions filled with PU chips and PU beads

**RECOMMENDED CUSHION COMBINATIONS**

Both the neck cushions and throw cushions are optional. Here is a brief overview of how they can be combined with different sofa configurations:



	Decorative cushions			Neck cushions	
	40 x 30 cm	40 x 40 cm	50 x 50 cm	short	long
Two-seater	2x		2x		
Three-seater	2x	2x	1x		1x
Corner sofa 4 elements	2x	2x	1x	1x	
Corner sofa 5 elements	2x	2x	2x	1x	1x



Sectional drawing of upholstery construction

The construction of the Soft Modular Sofa provides outstanding comfort: the underlying foundation is a box-like wooden frame, which rests on individually height-adjustable legs concealed by the black base frame. No-sag steel springs are integrated in the seat area of the wooden frame. These ensure that the cushions return to their original shape after use and prevent ripples from forming in the cover material.

The seat and back cushions consist of two optimally coordinated types of foam with varying degrees of firmness. The upholstery structure is completed with a layer of viscoelastic foam, which keeps the sitter from sinking too deeply into the seat.

All these elements are carefully balanced, ensuring that the Soft Modular Sofa satisfies the comfort needs of all customers. The back and armrests have a similar construction and can be sat on without fear of damaging the upholstery.

No animal feathers are used in the upholstery. This avoids the typical rustling sound associated with such materials and also makes the Soft Modular Sofa suitable for people who are allergic to animal feathers.

## USEFUL FACTS ABOUT UPHOLSTERY

Vitra has over fifty years of experience in the production of upholstered furniture. Premium materials, skilled craftsmanship and high quality standards at Vitra are a guarantee for long-lasting products. In Vitra's own test centre, our upholstered furnishings are regularly subjected to a wide range of tests that far exceed common standards.

### Care instructions:

Exposure to direct sunlight should be avoided whenever possible, since intensive radiation can cause cover materials to fade.

To retain the original fullness and shape of your sofa, cushions should be regularly shaken and plumped.

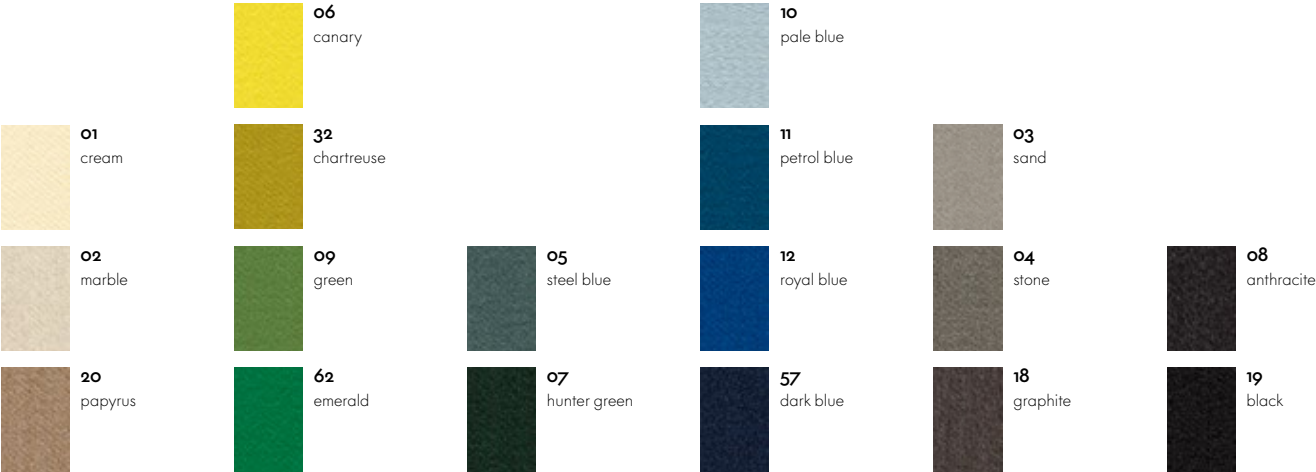
Folds and creases from sitting can be prevented in all types of upholstery by smoothing the cover material after use.





**Aura**  
97% new wool, 3% polyamide | 390 gr/m²

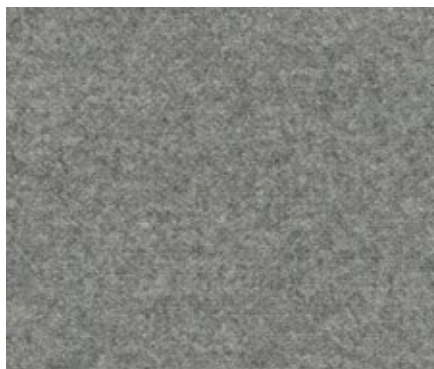
The woollen textile Aura has a classic satin (atlas) weave with a fine, soft surface. This fabric is distinguished by a supremely soft feel, lustrous sheen and smooth even surface. The solid and mixed colours feature dynamic, highly saturated tones made possible by wool's excellent dyeability.  
Aura is available in 26 colours.



Aura



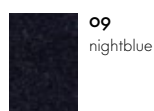
Aura



### Cosy

80% new wool, 20% polyamide | 450 gr/m<sup>2</sup>

Cosy is a milled, plain-weave woolen cloth of high quality with a natural, Nordic-inspired character. The subtly variegated colours and coordinated contrast stitching produce a refined visual effect. The visible fibres enhance the cloth's natural appearance. Cosy facilitates an optimum heat exchange, which provides pleasant thermal conditions for the sitter. Cosy is available in 10 colours.



**09**  
nightblue



**01**  
pebble grey



**02**  
fossil



**04**  
velvet brown



**03**  
nutmeg



**05**  
aubergine



**11**  
merino black



**10**  
classic grey

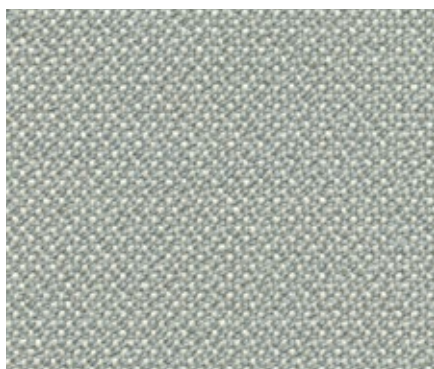


**08**  
black forest



**06**  
dark aubergine

Cosy



### Credo

95% new wool, 5% polyamide | 640 gr/m<sup>2</sup>

Credo is a durable woolen fabric made of premium worsted yarn with a pleasant feel. The two- and three-tone colours give this fabric a characteristic structure and vibrant appearance. Credo allows for an effective exchange of heat to ensure comfortable thermal conditions for the sitter. The fabric can also be used in office environments.

Credo is available in 22 colours.



**01**  
cream



**19**  
lime/curry



**11**  
cream/dolphin



**25**  
mother-of-pearl/  
black



**17**  
black/auber-  
gine



**18**  
pale rose/  
cognac



**20**  
dolphin/  
steel blue



**06**  
anthracite/  
elephant



**05**  
chocolate/black



**23**  
pale rose/  
dark orange



**12**  
rock



**14**  
sand/avocado



**21**  
royal blue/  
elephant



**07**  
black/anthracite



**27**  
bitter chocolate



**15**  
saffron



**13**  
salt'n pepper



**22**  
emerald/ivy



**26**  
teal blue/black



**08**  
dark blue/black

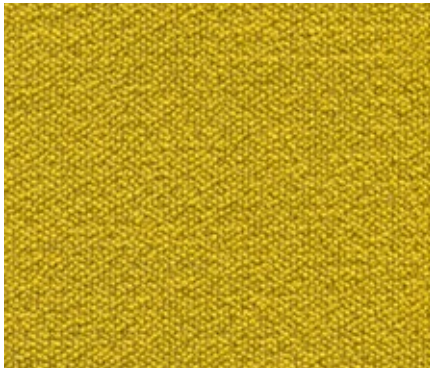


**24**  
mauve grey/  
mid-grey



**16**  
red chilli

Credo

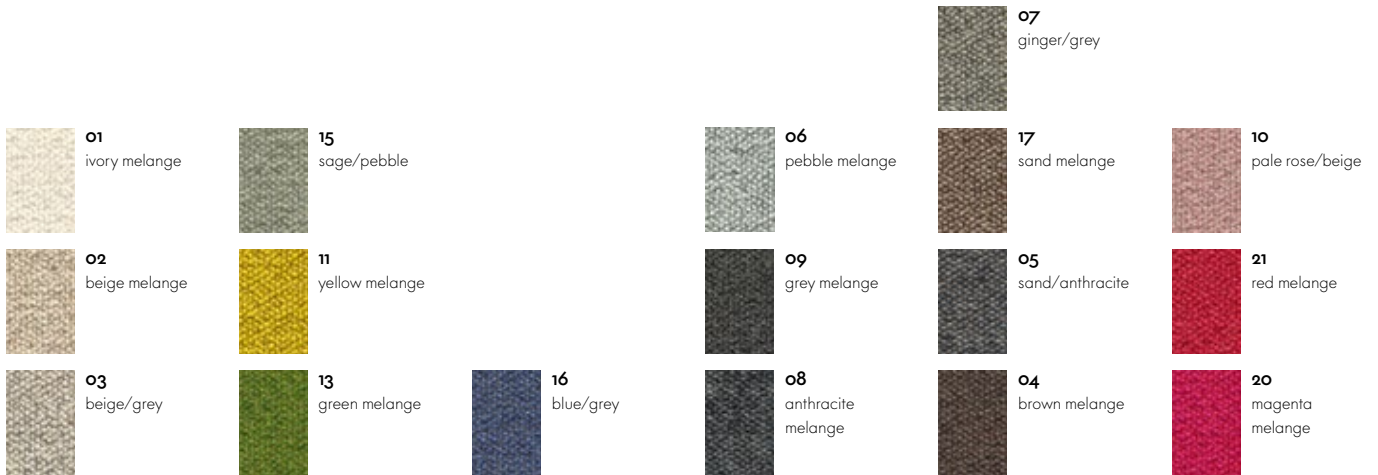


## Dumet

9% polyamide, 46% cotton, 8% linen, 22% wool, 15% rayon | 485 gr/m<sup>2</sup>

Dumet is a cotton blend in a plain weave with a lively appearance. The natural mixed tones create an elegant look with an Italian flair. Dumet is soft and cool to the touch.

Dumet is available in 17 colours.



Dumet



## Iroko 2

32% cotton, 20% polyester, 48% acrylics  
| 700 gr/m<sup>2</sup>

Iroko 2 is a soft, flat woven fabric made with chenille yarn. The piles in the yarn give the weave a lively surface texture with an inviting, velvety touch. The fabric's cotton fibres provide excellent cooling properties.

Iroko 2 is available in 17 colours.

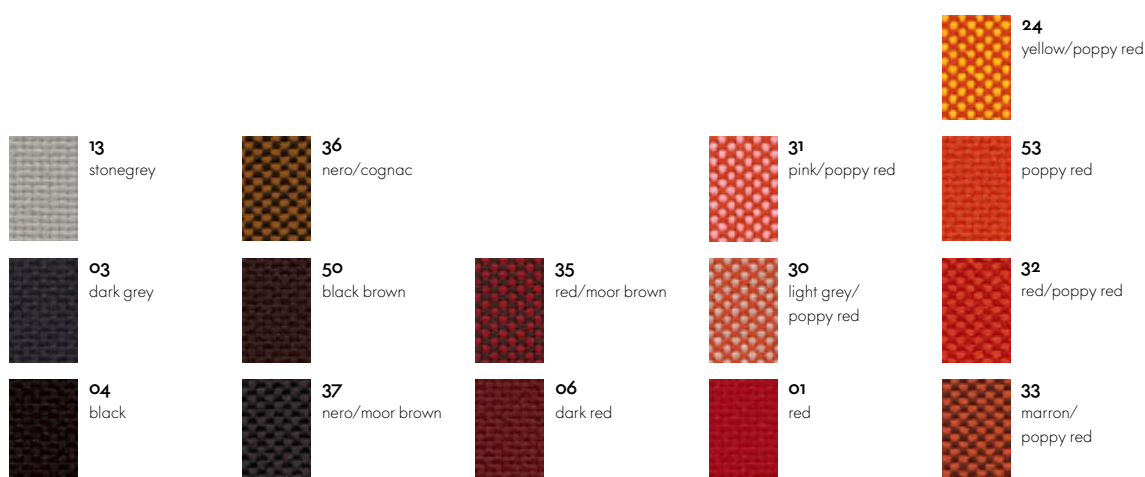


Iroko 2

**Laser**100% Trevira CS polyester | 520 gr/m<sup>2</sup>

With its distinctive woven structure, Laser makes a robust and striking cover fabric. The varied palette offers a wide selection of colours, with the duotones showing off the woven structure to even greater advantage. Practical and easy to care for, as well as durable and highly abrasion-resistant, Laser is also well suited for office environments.

Laser is available in 35 colours.

**Laser****Laser**



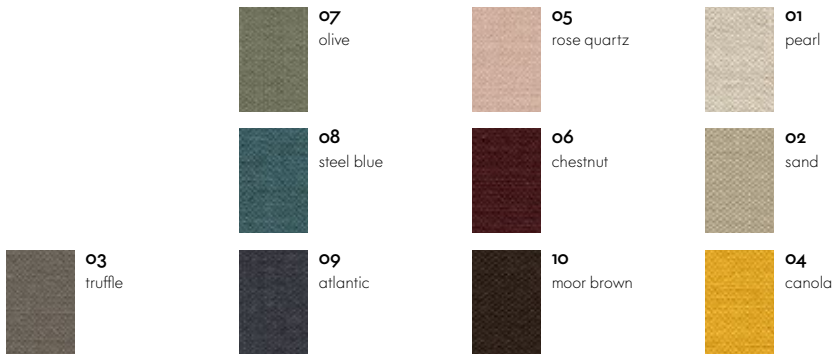


## Linho

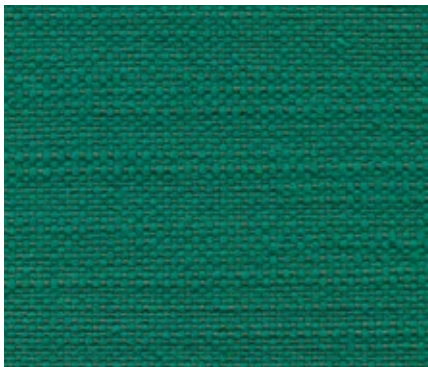
9% polyamide, 91% linen | 450 gr/m²

The high-quality linen fabric Linho is manufactured in Belgium, from the plant to the finished textile. It has the slightly irregular appearance that is typical of linen yarn. Due to its high percentage of linen, Linho tends to form elegant creases, lending a natural look to soft upholstered furniture.

Linho is available in 10 colours.



Linho



## Maize

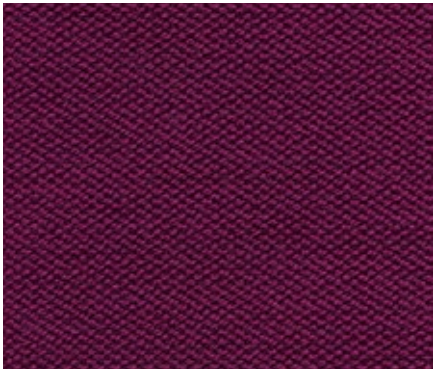
100% new wool | 515 gr/m²

Maize is a heavy-weight woollen textile. Slub and worsted yarns with an irregular balance between warp and weft create a natural handwoven character. The high-contrast duotone shades define the visual appearance of Maize and give the fabric its lively depth.

Maize is available in 19 colours.



Maize



Moss

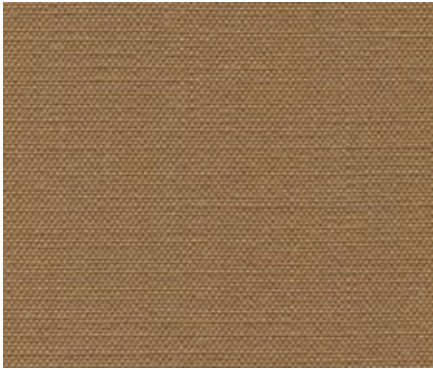
85% wool, 15% polyamide | 450 gr/m²

The Panama weave combined with the slub yarn gives the woollen fabric Moss a vibrant look. The grainy feel of the material imbues it with a slightly Nordic character, while the polyamide content in the blend guarantees outstanding technical values.

Moss is available in 16 colours.



Moss



Olimpo

70% linen, 30 % viscose | 520 gr/m²

The typical linen texture of Olimpo gives the fabric a very fine and natural overall appearance. The high percentage of linen in Olimpo is clearly evident to the touch, resulting in comfortably cool conditions for the sitter. Thanks to the combination of viscose and linen, the fabric is durable and abrasion-resistant and exhibits a fine sheen.

Olimpo is available in 10 colours.



Olimpo

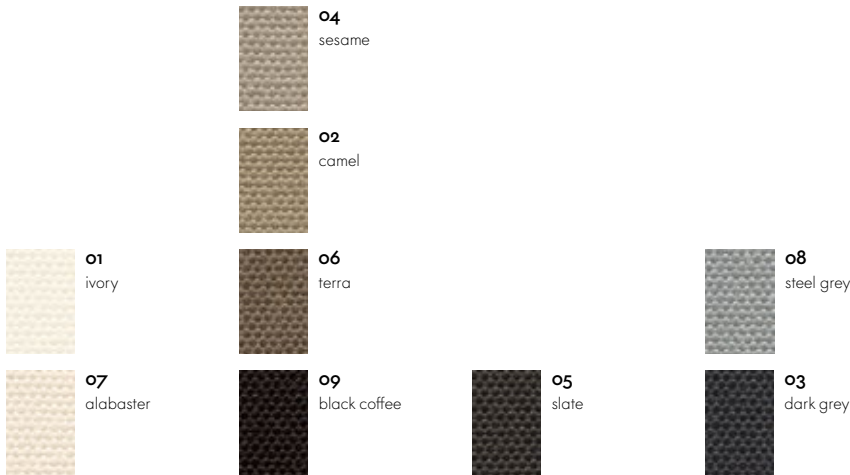


## Over

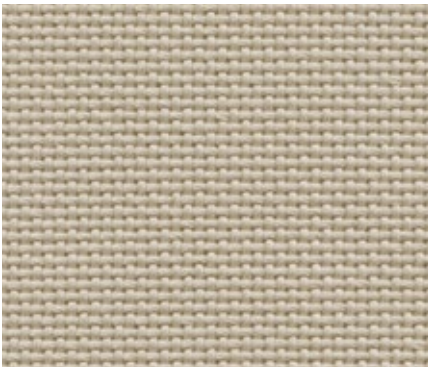
19% cotton, 21% linen, 60% rayon | 710 gr/m<sup>2</sup>

Over is a medium-weight cover fabric with an elegant nubby weave and fine lustre. The linen content is perceptible to the touch and ensures comfortably cool conditions for the sitter. The harmonious colour palette of Over is inspired by natural hues.

Over is available in 9 colours.



Over

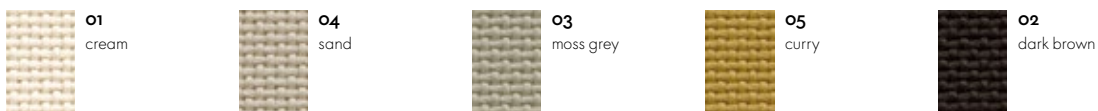


## Panamone

100% cotton | 780 gr/m<sup>2</sup>

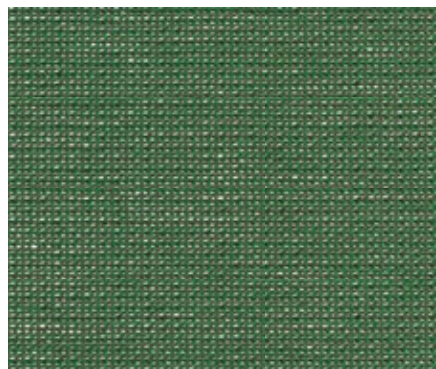
Panamone is a soft, yet sturdy cotton fabric in a natural-looking heavy-texture weave. The clear, minimalist impression made by the thick yarn lends the fabric a uniquely distinctive character.

Panamone is available in 5 colours.



Panamone



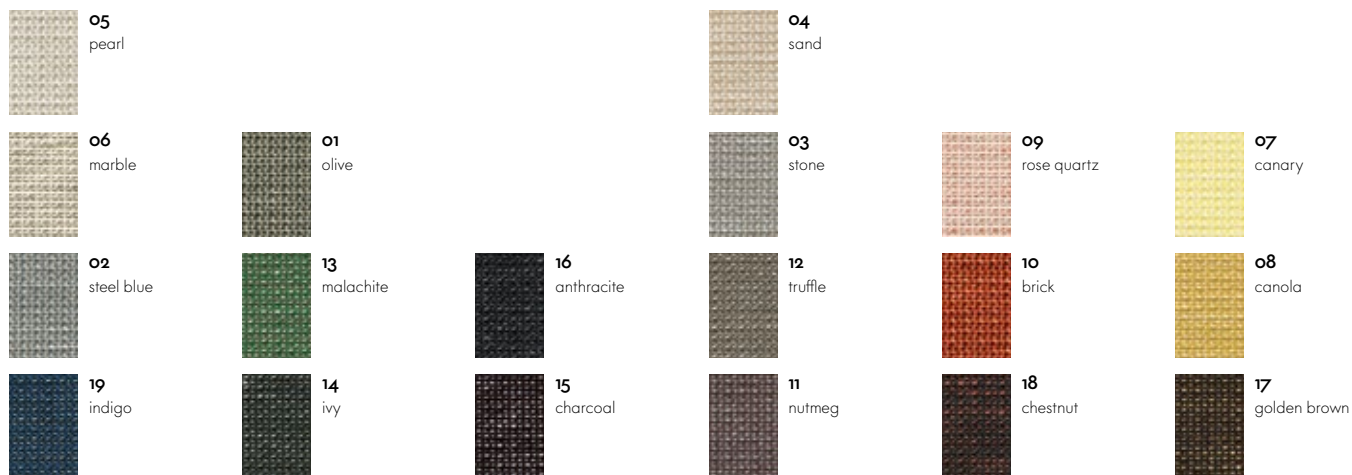


### Reed

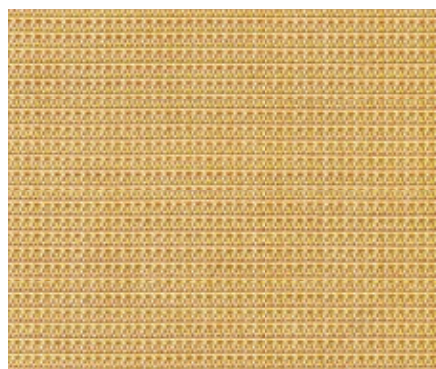
7% polyamide, 48% cotton, 25% new wool, 20% linen  
| 400 gr/m<sup>2</sup>

The elegant finely patterned fabric Reed is a blend of linen, wool and cotton. The structure of the fabric designed by Hella Jongerius has a hand-made look, its irregular lively linen yarn lending the fabric a natural expression. Reed is cool and soft to the touch and can be perfectly combined with other fabrics and materials.

Reed is available in 19 colours.



Reed

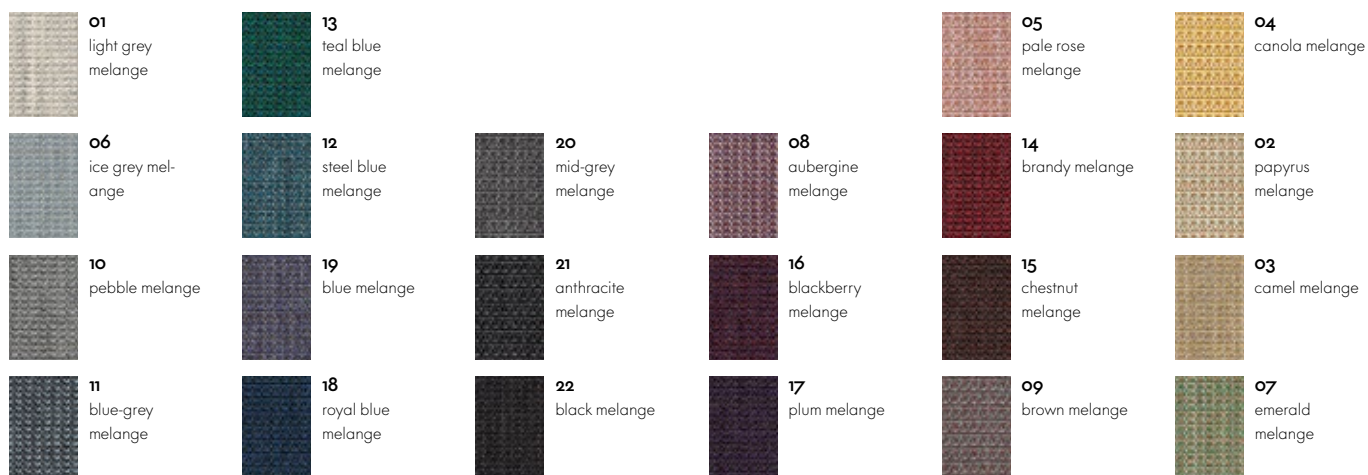


### Tress

8% polyamide, 19% polyester, 73% new wool  
| 310 gr/m<sup>2</sup>

Tress is a flat woven fabric with a lively appearance that derives from the contrast between its even structure and the natural melange of colours. The combination of yarns with varied hues creates a harmonious and yet vibrant look. Thanks to its high wool content, Tress is a durable, easy-care material with a home-like aesthetic.

Tress is available in 22 colours.



Tress





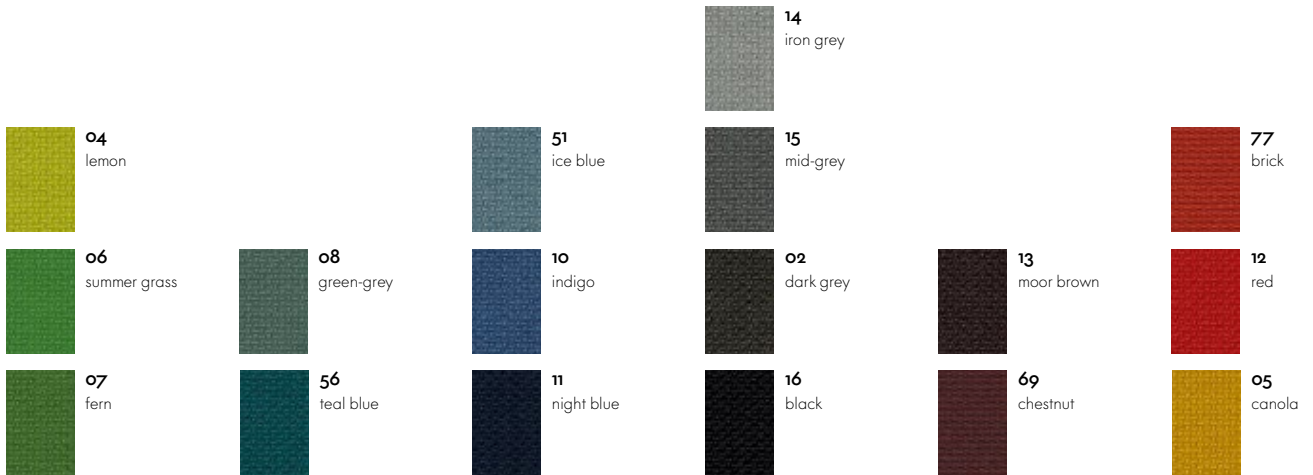
## Volo

85% new wool, 15% polyamide | 435 gr/m<sup>2</sup>

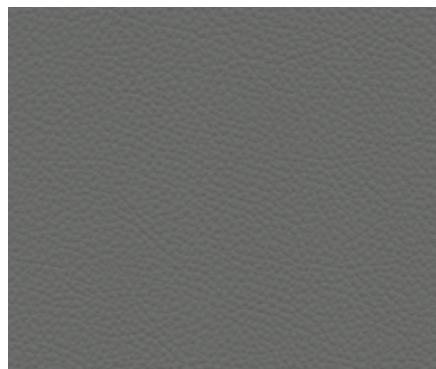
Volo is a finely structured wool blend with a refined weave that gives it an elegant appearance. This expressive textile shows strong solid colours to full advantage while simultaneously offering pleasant tactile qualities.

With its soft look and appealing texture, Volo is a perfect fit for home interiors, but it is also well suited for use in the contract sector.

Volo is available in 17 colours.



Volo

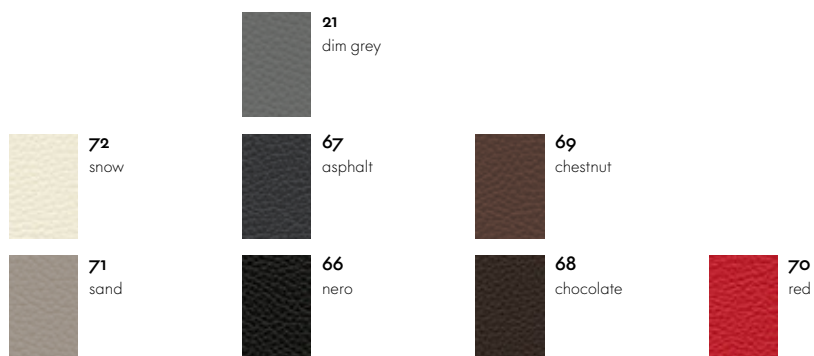


### Leather

Thickness 1,1-1,3 mm, pigmented leather

The standard grade leather used by Vitra is a robust cowhide leather, dyed-through, pigmented and embossed with an even grain pattern. Since it is hard-wearing and easy to maintain, it can also be used in office environments.

Standard Leather is available in 7 colours.



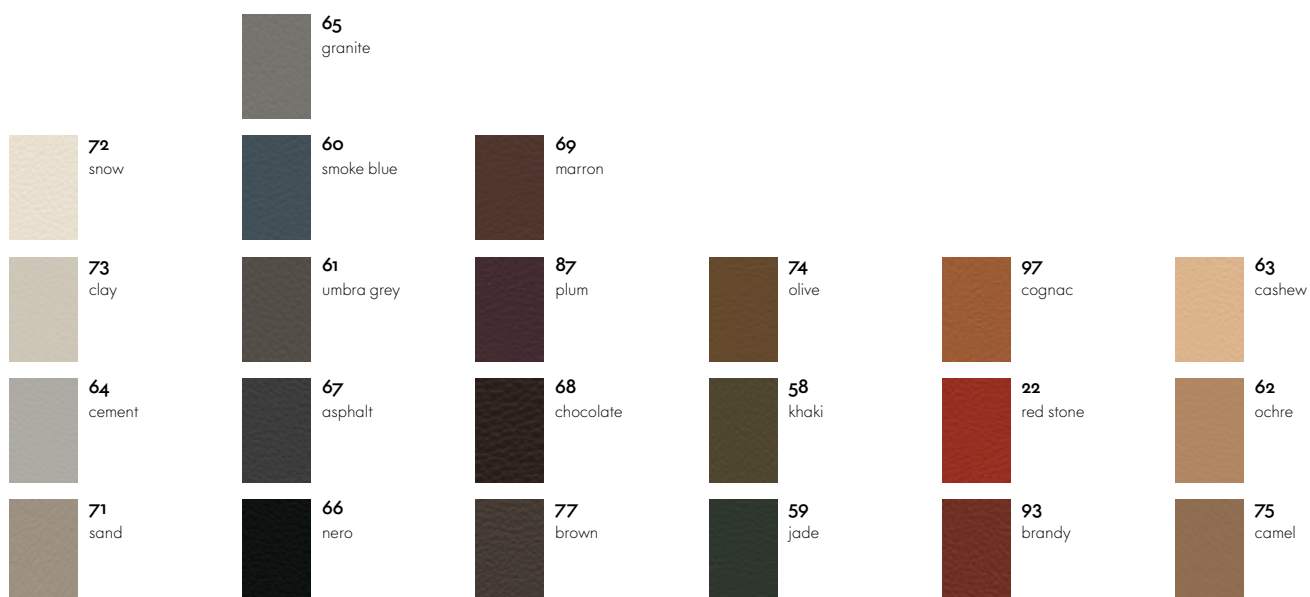
### Leather



### Premium Leather

Thickness 1,1-1,3 mm, semi-aniline-leather

Premium leather is a relatively smooth cowhide leather with a flat grain and fine top sheen. It is dyed-through and lightly pigmented. The semi-aniline leather is soft to the touch, like a leather glove. Premium leather is available in 22 colours.



### Leather Premium

Thanks to its modest design, the Soft Modular Sofa can be combined with many types of coffee tables. From the available Vitra coffee tables, we recommend the following models:



**Eames Coffee Table,**  
**Marble table top**  
Charles & Ray Eames, 1949,  
76 x 76 x 39 cm



**Eames Coffee Table,**  
**Wooden table top**  
Charles & Ray Eames, 1949,  
114 x 76 x 39 cm



**Coffee Table,**  
**Isamu Noguchi, 1944**  
128 x 93 x 40 cm



**Metal Side Table,**  
**Ronan & Erwan Bouroulec, 2004**  
31,5 x 31,5 x 38 cm | 40 x 40 x 44,5 cm |  
70 x 31,5 x 33,5 cm



**Wood Side Table**  
**Ronan & Erwan Bouroulec, 2016**  
31,5 x 31,5 x 38 cm | 40 x 40 x 44,5 cm |  
70 x 31,5 x 33,5 cm



**Leather Side Table**  
**Ronan & Erwan Bouroulec, 2014**  
31,5 x 31,5 x 38 cm | 40 x 40 x 44,5 cm



**Occasional Low Table Wood**  
**Jasper Morrison, 2016,**  
Ø 50 x 35, 45, 55 cm



**Occasional Low Table Aluminium**  
**Jasper Morrison, 2016,**  
Ø 50 x 35, 45, 55 cm



**Plate Table, Jasper Morrison, 2004,**  
40 x 40 x 37 cm | 70 x 70 x 37 cm | 120 x 40 x 37 cm | 120 x 70 x 37 cm



